

## CALENDAR OF EVENTS

**MAR 18 Microsoft/Artist Lecture: Lead Pencil Studio**, 1-2p, Microsoft Campus/ Building 33/Conference Center, Free

[Annie Han and Daniel Mihalyo talk about utilizing unconventional architectural systems and new media to explore issues of spatial perception.]

**MAR 20 AIA Seattle/NW Home Open House** Noon-3pm, Zimmer/Swimmer Residence, 2514 41st Ave SW, Seattle, open to the public. <http://aiaseattle.org/node/5315>

**MAR 26/27 Taste Washington! The Ultimate Wine Experience.** Seminars on Saturday, Mar. 26 at Bell Harbor International Conference Center & Grand Tasting on Sunday, Mar. 27 at Qwest Field Event Center <http://tastewashington.org/>

**APR 1/30 Skagit Valley Tulip Festival** 6:30-8:30p, Mt. Vernon, 60 mi. N. of Seattle, [www.tulipfestival.org/](http://www.tulipfestival.org/)

**APR 8 Opening Day/Seattle Mariners vs. Cleveland Indians.** 7:10p, Safeco Field. <http://seattle.mariners.mlb.com>



## Coyote Central Celebrates Its First Open House!

More than 350 people came out Sunday, March 6th, to celebrate Coyote Central's first Open House located at 23rd Avenue and Cherry Street. With it's Grand Opening expected in June, Coyote Central hopes to offer 85 courses this summer!

## A Sense of Place

by Ray Johnston, AIA, MAIBC

A forested glen, the rush of a nearby stream, mountain vistas, neighbors close by (or far away)? Which of these conditions resonate? Perhaps a combination of these with a liberal blend of recreational opportunity are key. When we are looking for land to occupy it is always difficult to imagine the way it might look with a new house, a driveway, the impact of development. Without care, the wonderful spot on a piece of property that we fall in love with disappears. The tendency to build upon that spot is great. Then, when all is done, we wonder where that wonderful little meadow or terrace disappeared to. Frequently its still there, but under the house, its character destroyed or replaced with something different. Good site design avoids this problem and can help to enhance and create a sense of place.

To read this full article, please visit: <http://johnstonarchitects.wordpress.com/>



## JA Call for Art Walk Submissions

JA is seeking local visual artists interested in exhibition work at our office as part of The Fremont First Friday Art Walk. To submit work, please send an email to [mia@johnstonarchitects.com](mailto:mia@johnstonarchitects.com) with examples of work and a brief artist statement, or a link to your updated web site. Our Arts Committee review submitted work and respond to each artist accordingly.

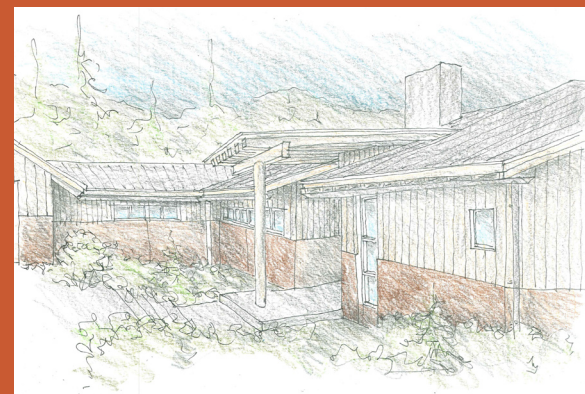
To view past exhibits, visit: <http://johnstonarchitects.com/artwalk.html>

## Alison Walker Brems Appointed to Landmarks Preservation Board



JA is proud to announce that one of our principals, Alison Walker Brems has been appointed to the City of Seattle's Landmarks Preservation Board. This board is responsible for the designation and preservation of more than 400 historic structures, sites, objects, and vessels, as well as seven historic districts throughout Seattle. LPB meetings are held the first and third Wednesdays of every month in Seattle Municipal Tower. In addition, Alison also serves on the Architectural Review Committee associated with the board. The ARC meets every other Friday.

## What's In Design



### Nelson Preserve House

JA has been tasked to dream up a modern retreat for a vibrant family of four near Cle Elum, WA. Situated in an L-shape around a large outdoor courtyard, the house protects the outdoor open space from the stiff northeast wind while honoring sweeping views of the mountains beyond and allowing the family to fully enjoy the eastern Washington sunshine. Modern materials and a reverence for the nearby historic Nelson Dairy Farm play off one another to create a ruggedly modern design with a nod to the past. Sweeping natural views are carefully juxtaposed with places for art to create a healthy mix of solid and void for internal coziness with an external outlook. Sustainable practices will be used to preserve the scenic surroundings for the youngest members of the family to enjoy well into the future.